

Measuring our impact in 2025

The year in numbers



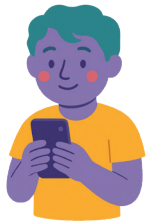
24,005 contacts

The total number of peer support sessions QLife delivered in 2025.



87.4% of service users

felt it was important that they were supported by someone from the LGBTIQ+SB communities.



67.6%

were phone calls.



32.4%

were via webchat.



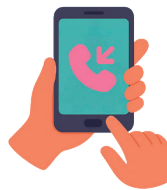
88.3% of service users

felt it was important that QLife is a LGBTIQ+SB specific service.



1 May 2025 was our busiest day

We responded to 102 contacts.



Highest answer rates ever

Our call answer rate increased by 17% compared to 2024!